

BERKELEY NATURAL HISTORY MUSEUMS GUIDE TO PUBLIC DISPLAYS

The Berkeley Natural History Museums are a consortium of natural history museums and field reserves at the University of California, Berkeley. Together, we curate over 12 million specimens in anthropology, botany, entomology, herpetology, mammalogy, ornithology, and paleontology.

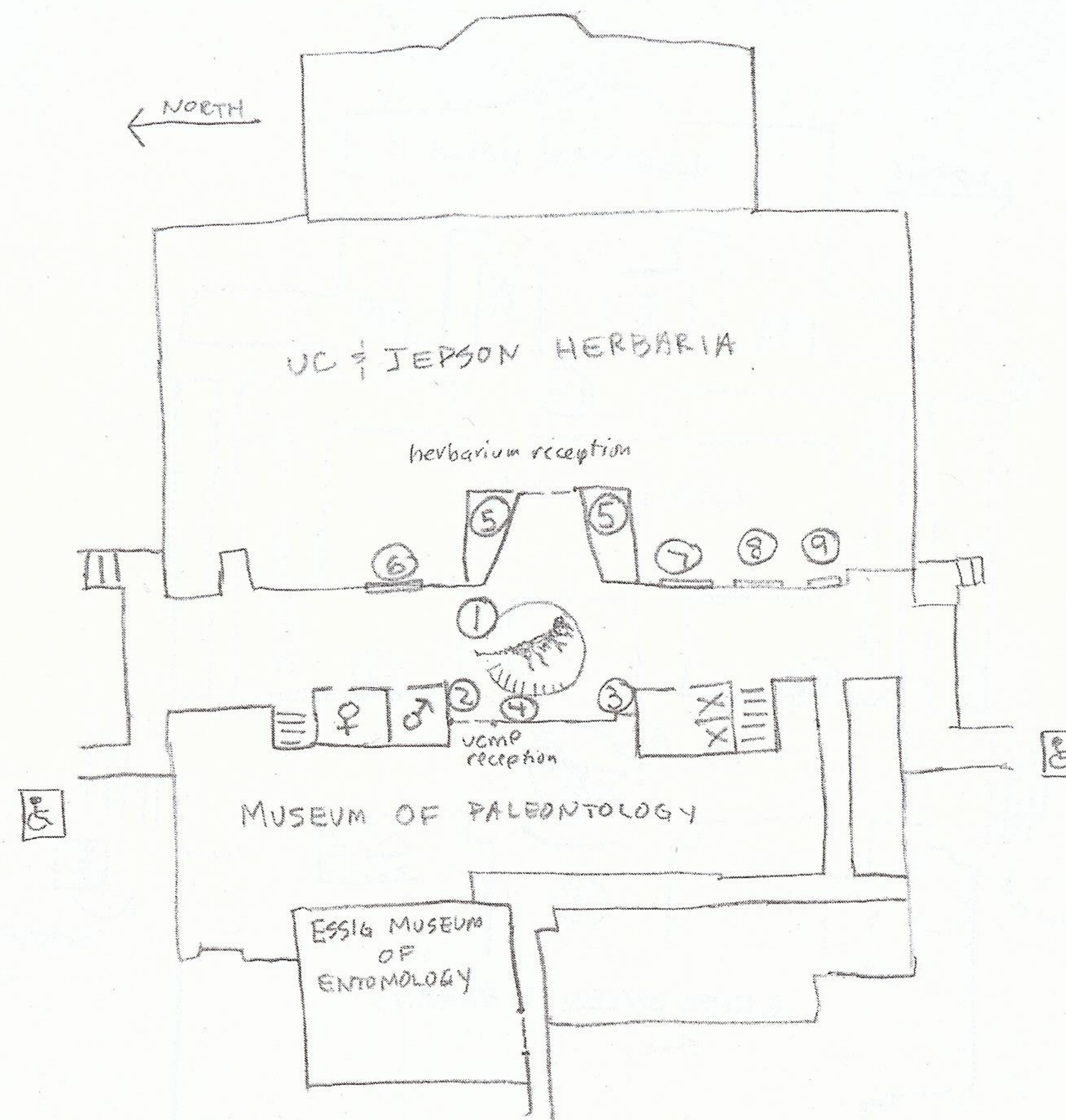
Museums are devoted to the collection and preservation of objects which might otherwise be lost to future generation. Many museums emphasize public exhibits while others, like the BNHM, are used mainly for research. Here in VLSB we do, however, have a number of exhibits on the public floors of the Valley Life science Building (VLSB).

These pages provide lists and locations of specimens on display in VLSB.

Building hours change during holidays and summer, but generally follow the hours of the Bioscience & Natural Resources Library. During regular semester sessions, the hours are generally M-Th, 8AM-10PM, F 8AM-5PM, Sa 1PM-5PM, Su 1PM-10PM (please check the library website to confirm hours):

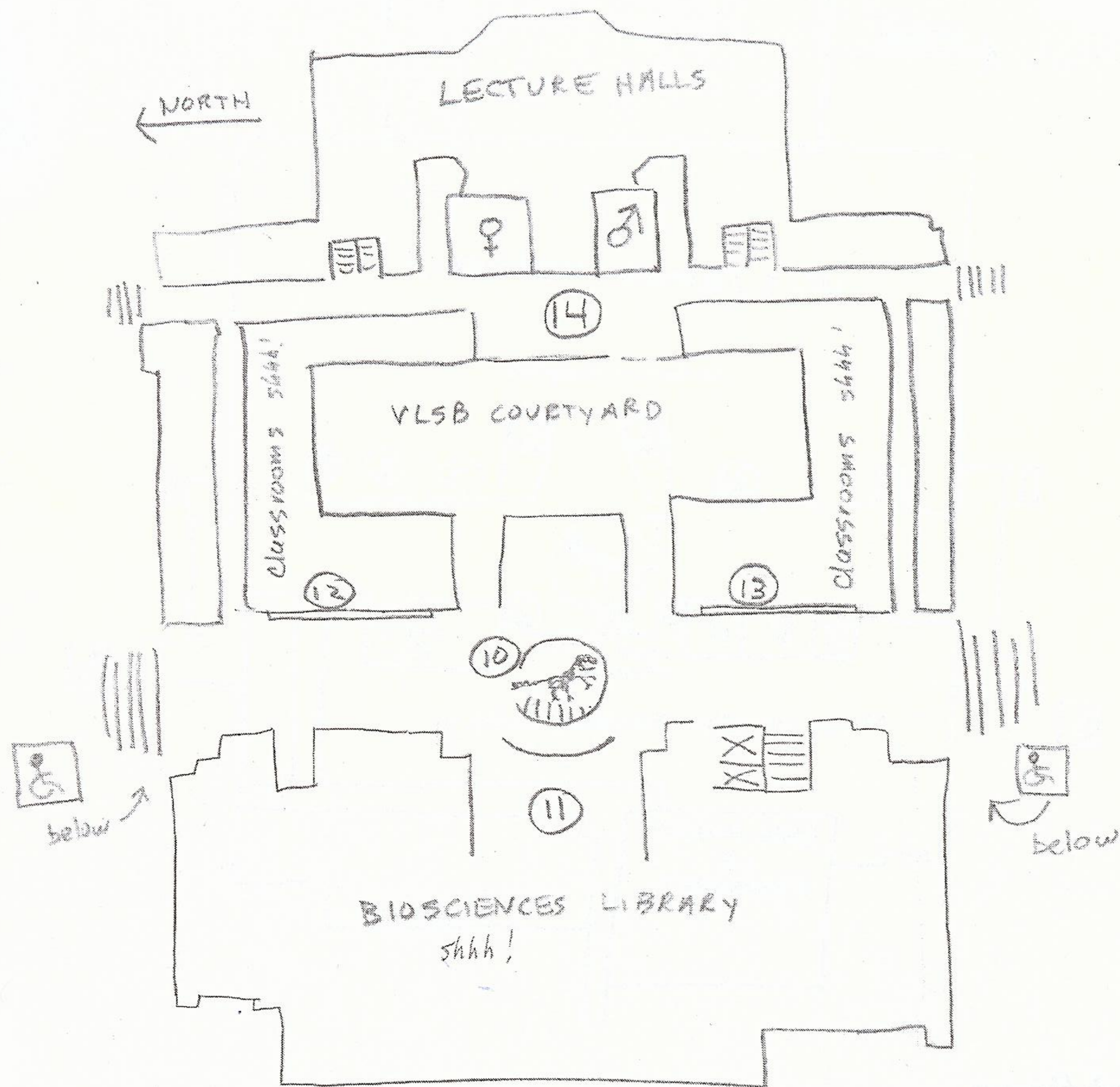
If you visit, please remember that this is a teaching and research facility. Respect the occupants by keeping your voices down. Thank-you!

For more information about the museums, see our website <https://bnhm.berkeley.edu/>



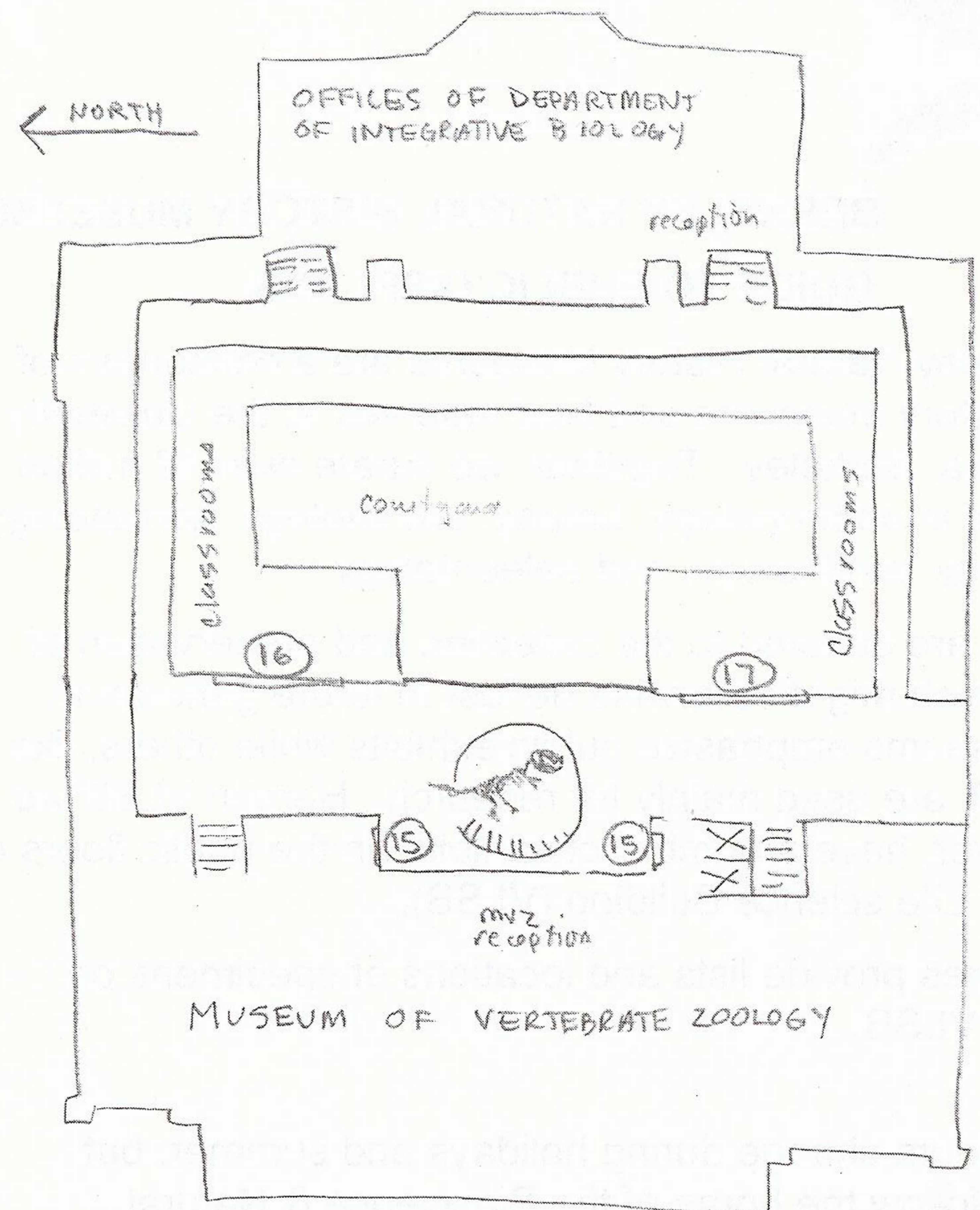
1st floor

- 1 *Tyrannosuarus rex* skeleton
- 2 interactive display about T rex
- 3 small display cases: UCMP research
- 4 *Edmontosuarus* skull, duck-billed dinosaur from ~70 mya
- 5 living display of relatives of Cretaceous plants
- 6 galls (galls are abnormal plant growths caused by insects, mites, nematodes, fungi, bacteria, and viruses, they are often colorful and bizarre looking!)
- 7 bees (this exhibit changes periodically)
- 8 *Stenopterygius* skeleton, an ichthyosaur from ~180 mya
- 9 diversity of insects, specimen display



2nd floor

- 10 *Pteranodon ingens*, a pterosaur from ~80 mya
- 11 *Triceratops horridus* skulls, ~70 mya
- 12 large case of smaller dinosaurs including *Archaeopteryx* (Jurassic), *Heterodontosaurus* ("fanged dinosaur" ~200 mya), *Parasaurolophus* skull, *Maiasaura* (a juvenile, Cretaceous), *Campylognathoides* (a Jurassic pterosaur)
- 13 Human evolution, great ape skeletons, saber-toothed cat
- 14 Gollub historical microscope collection



3rd floor

- 15 6 small cases describing the work of the Berkeley Natural History Museums
- 16 skeleton of wild boar (*Sus scrofa*), educational offerings of MVZ
- 17 mountain goat skeleton (female) and big horn sheep (no skull), description of research activities of MVZ